

# HTMS-86

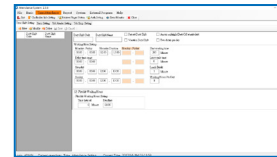
## Time & Attendance Management System

### ■ Modular designs software, suit for different application

- Modular design software integrates access control, elevator management and parking control in a unified platform. Provide wide expansion for current and future operation.
- Multi-function application, provide cheaper but complete program.

### ■ Using Object-Oriented Programming, expedites client software development time

- Programmed in Visual Studio .NET C# , object-oriented program design for flexible software customization.
- Capable of meeting different user requirements.
- Special modular design, support 3rd party integration.
- Access database, easy and quick installation. Support users in developing different database.

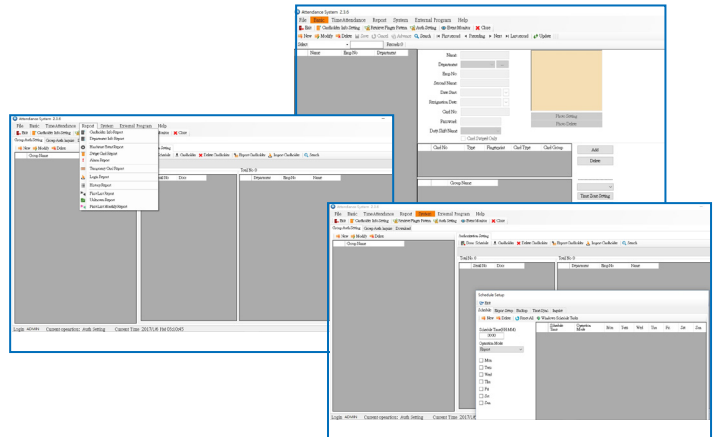


### ■ Multi-language support

- Use XML as a multi language switching data format to provide a customized development and design tool
- Provide multi-language tool, shorten compose time
- Provide flexible wording which base on different countries' demands.

### ■ Wide selections of communication interface and parameter setting.

- Support communication via RS-232, RS-485 or TCP/IP.
- Synchronization function and parameter setting.
- Check Card No status setting.
- Audio Prompt adjustment.
- Retrieve Valid code setting
- Support daylight saving time, suit for global country.
- Support six different duty shifts and allow users define it.
- Duty time switch table.
- Re-swipe card check time setting.
- Support simple access control function.
- Allow users define fingerprint authentication mode.
- Siren Timetable
- Different LCD display mode.
- Settable Mifare keys to all Mifare readers at a time
- Provides time calibration for access controllers or time attendance recorders according to different time zones



### ■ Schedule Setup

- Scheduled different operation modes in specific time.
- Schedule setup included:
- Export records setup : User-define export path and column.
- Synchronization : Synchronize to all controllers or specific controllers.
- Backup setting.
- First-last records export for time and attendance used.

### ■ Time & Attendance Management

- Flexible management of employee's records.
- Friendly operation and quick setup of shift schedules
- User-defined work hours, work schedules, work shifts etc.
- Export function supported for immediate calculation of employee's time attendance records.
- Employee's time & attendance query and report generation

### ■ Models Supported :

Time Attendance Recorders	HTA-820 / 830 / 840 / 850 / 860 / 870
Biometric Time Attendance Recorders	HTA-500F / HTA-502F / HTA-852F / HTA-860F / HTA-870F

### System Requirements:

#### Hardware:

CPU: Dual Core and above  
 Memory: 4G memory and above  
 Hard Drive: 500 GB HDD and above, 2 pieces are proposed.  
 Graphics Card : 1G memory and above  
 Monitor: 1024 x 768 at least  
 At least one Com Port  
 Built-in TCP/IP (10/100M) RJ-45 communication

#### Database: Access

#### Operating System:

Windows 7  
 Windows 8  
 Windows 10  
 Windows 2003 Server  
 Windows 2008 Server  
 Windows 2012 Server  
 Provides English, Traditional and Simplified Chinese.

